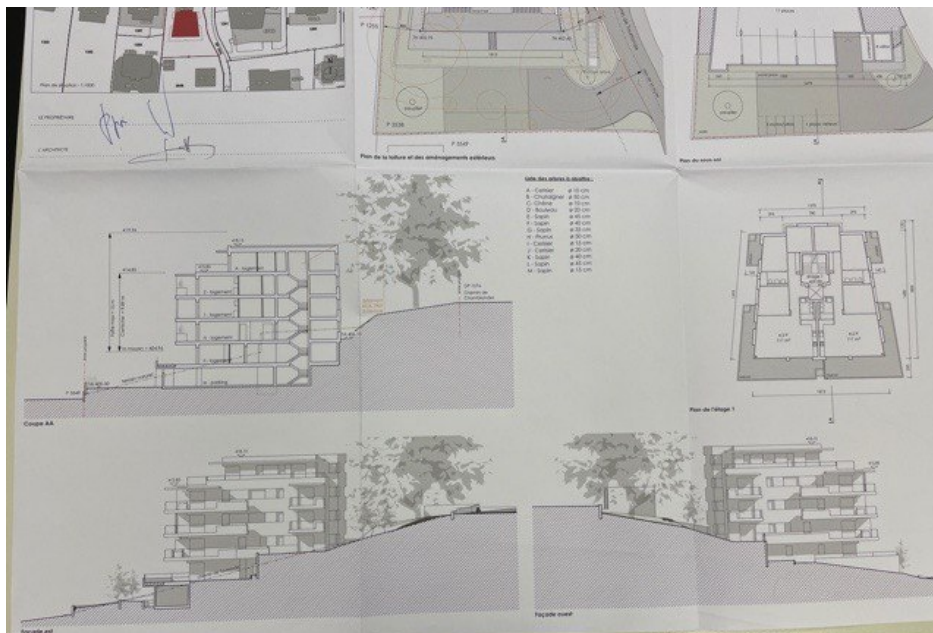
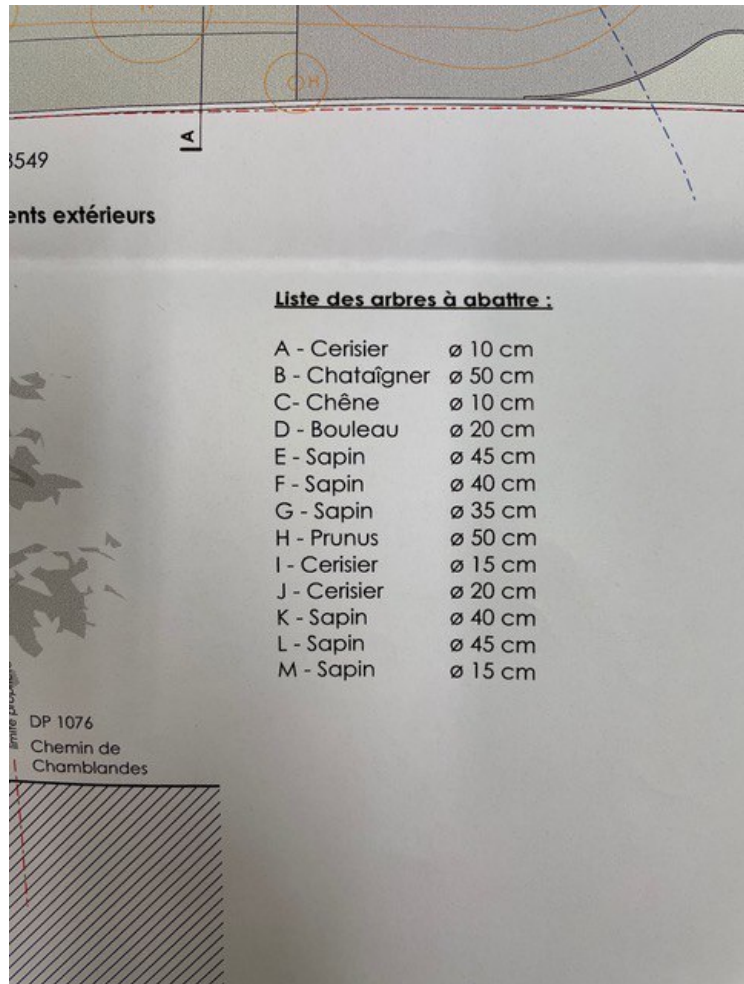
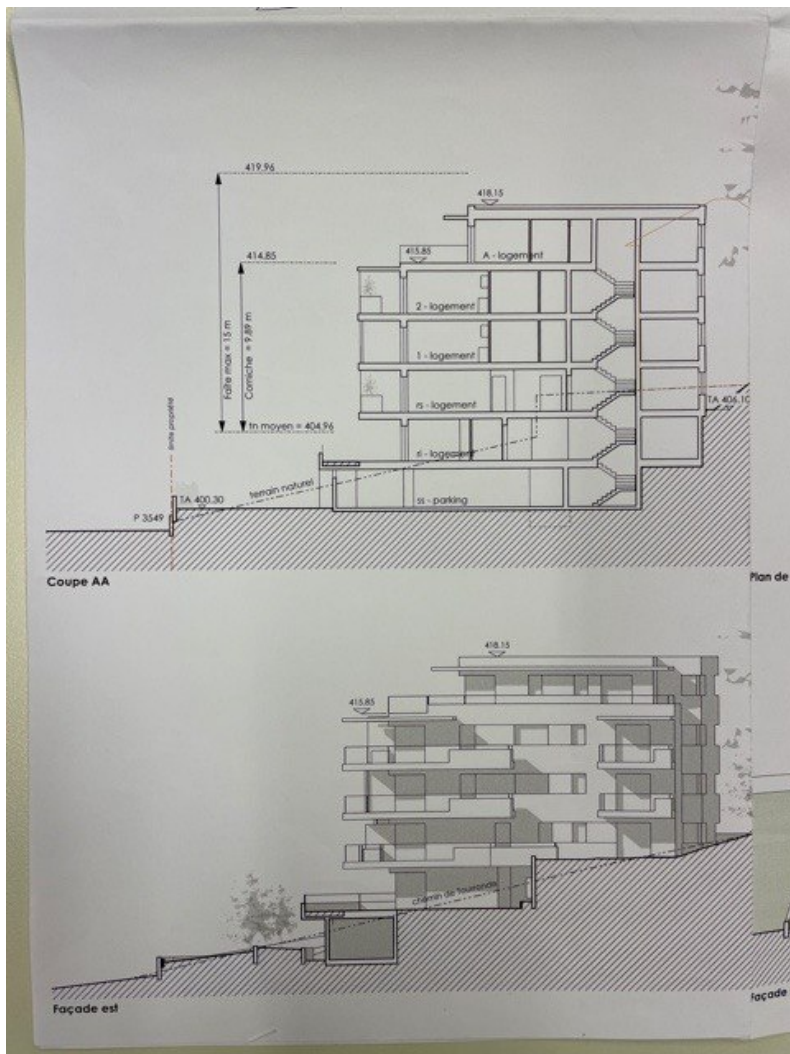


Mise à l'enquête Chamblandes 35, 1009 Pully, dossier CAMAC 216119 consultable au greffe municipal jusqu'au 14 octobre.

<https://www.actis.vd.ch/rest/exp/idqry/9008/param/216119>





Liste des arbres à abattre :

- A - Cerisier \varnothing 10 cm
- B - Châtaigner \varnothing 50 cm
- C - Chêne \varnothing 10 cm
- D - Bouleau \varnothing 20 cm
- E - Sapin \varnothing 45 cm
- F - Sapin \varnothing 40 cm
- G - Sapin \varnothing 35 cm
- H - Prunus \varnothing 50 cm
- I - Cerisier \varnothing 15 cm
- J - Cerisier \varnothing 20 cm
- K - Sapin \varnothing 40 cm
- L - Sapin \varnothing 45 cm
- M - Sapin \varnothing 15 cm

DP 1076
Chemin de
Chamblandes

